



*heating and plumbing products
that won't cost the **earth***

Water Treatment products

July 2010



Water treatment products

Description

The Evolution series of descaling pumps offer a new way of descaling solar systems. Each pump in the range features a special hermetic cap (patent pending), constructed from shockproof and anti-corrosive plastic. This effectively hermetically seals the pump - thus preventing the exhalation of chemical substances that cause corrosion to the metallic materials used in the system's construction. The cap also contains all the pipes and cables, making the transport and handling of the pump much easier. Finally, all pumps in the range are fitted with the new Powerflux flow inverter.

Key features

Each pump is fitted with the Powerflux flow inverter which attacks scaling from both sides of the circuit.



The solid pump body has no welded joints and uses just two parts, making servicing operations easy. Parts replacement can be carried out by a professional without recourse to specialist help.



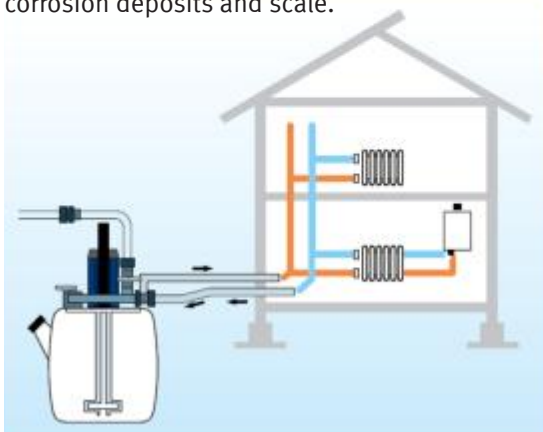
A special funnel makes filling the tank easy and safe.



The air valve helps greatly when emptying the tank.



Whilst the smaller 10 and 20 litre capacity units resolve many issues easily, the newly released Promax 30 Supaflush has been specially developed for flushing central heating systems to resolve circulation and boiler noise problems caused by accumulations of sludge, corrosion deposits and scale.



Evolution 20
(20 litres capacity)



Evolution range



Promax 30 new Supaflush

	Evolution 10	Evolution 20	Promax 30 new Supaflush
tank capacity (ltrs)	10	20	27
H x L x D (cm)	46 - Ø30	55 - 44 - 32	58 - 45 - 30
Weight (kg)	7	8.5	13
Flow rate max (ltrs/hour)	2200	2600	5400
Power consumption	0.18	0.18	0.45
Head (max.press.bar)	1	1	1
Class of protection	IP54	IP54	IP54

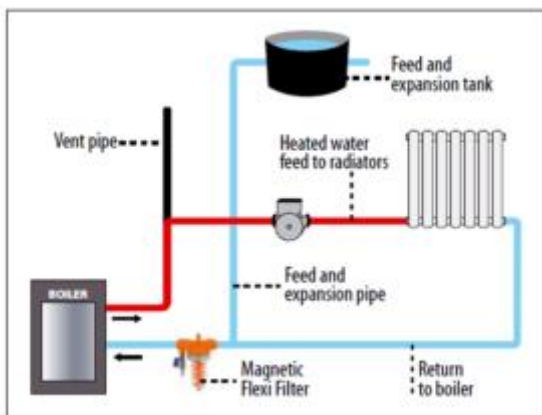
Water treatment products

Mini magnetic filter - description

This mini magnetic filter has been developed in order to protect the heating system from harmful iron oxide and sludge build-up.

The device can either be installed permanently or used in conjunction with the new Promax 30 Supaflush (mentioned and pictured on previous page).

The externally removable magnet prevents direct contact between hands and the system fluids. Water is forced over its fins, maximising iron oxide retention due to the increased surface area. A transparent housing enables an easy visual check of the amount of iron oxide retained. Connections are $\frac{1}{2}$ " x $\frac{1}{2}$ " F.



detail of minimagnetic filter

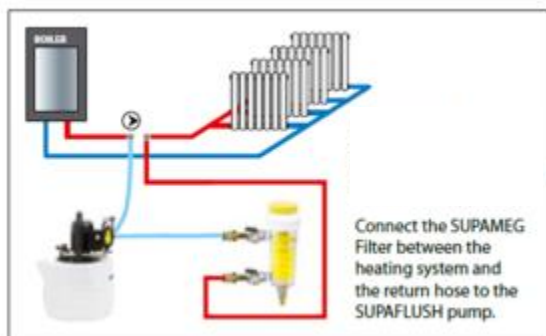
Magnetic filter - description

This larger magnetic filter offers a massive 12,000 gauss of magnetic power.

The device is generally used in conjunction with the new Promax 30 Supaflush (see previous page).

Like the mini, this externally removable magnet prevents direct contact between hands and the system fluids. Water is forced over the fins, maximising iron oxide retention due to the increased surface area. A transparent housing enables an easy visual check of iron oxide retention and a drain tap allows easily removal of the iron oxide particles.

Connections are $\frac{1}{2}$ " x $\frac{1}{2}$ " F.



12,000 gauss magnetic fiiter

Water treatment products

Adaptor kit for descaling and de-sludging plate heat exchanger



Pump Adaptor

