



INSTRUCTIONS

FOR INSTALLING AND USING

Solarseal roof flashing kits

March 2010

inta^{ECO}

Installation information

Installing Solarseal roof flashing kits

Connecting the solar panel array to the hot water system means that the roof must be penetrated to allow access for pipe work and sensor cables.

To ensure a water and weather tight seal on all the usual roof materials - tile, slate and metal, the use of products specifically designed and tested for use in this highly exposed area is critical.

The Solarseal range meets the most demanding specification and offers easy-to-use solutions for the common roof types.

Solarseal 101L - slate and tile roofs

This is a versatile lead based flashing with silicone pipe seals for both the inlet and outlet pipes connected to the solar panel. The lead is painted to provide a long, maintenance free life and will not whiten or corrode.

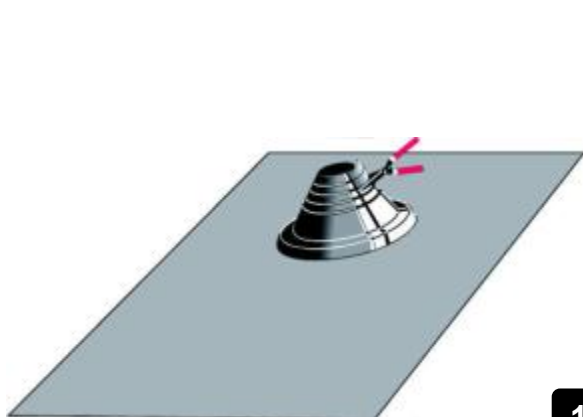
Solarseal 220A - slate and tile roofs

A single aluminium sheet roof flashing kit with two entry points for the pipework. These are supplied as a single flashing slate, offering water and weather tight seals.

Installing to a slate or flat tiled roof

Firstly, determine the position of the hot water pipe, ensuring that it is clear of rafters and battens.

Then, drill a pilot hole through the tile/slate. Next, using a core bit, drill a hole of 65mm to allow for the overall diameter of the insulated pipe.



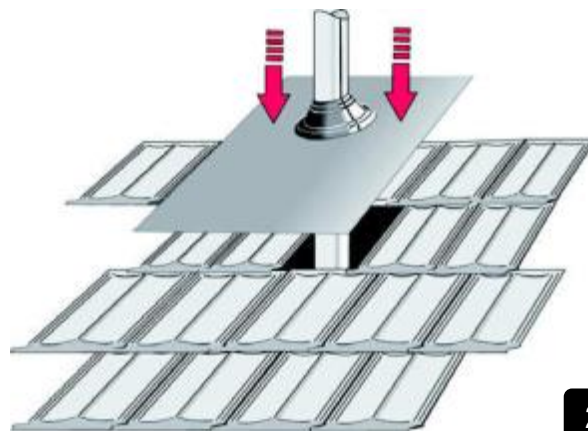
1

Cut the rubber gasket along the marked measurement lines using scissors or a craft knife. Cut the hole at least 15mm less than the overall diameter of the insulated pipe.



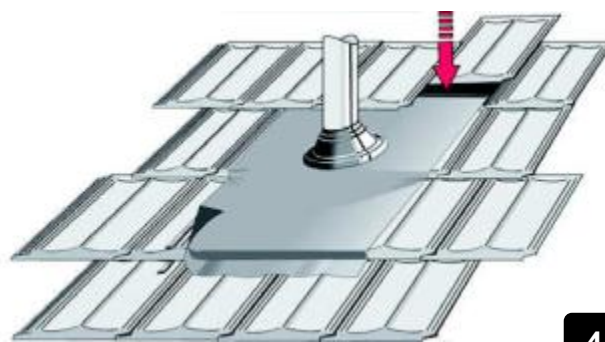
3

Fold the flashing over to form an anti-capillary fold at the top of the base as shown above.



2

Use water as a lubricant when sliding the flashing down the pipe.

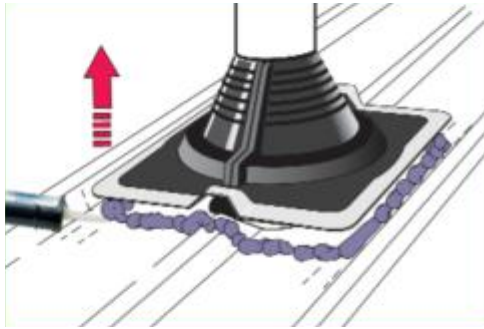


4

Place the flashing underneath the top tiles.

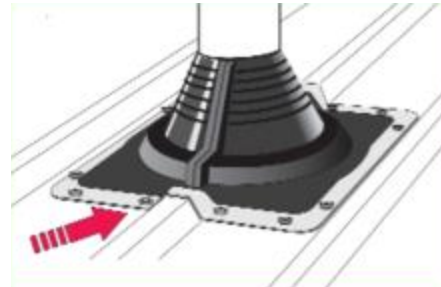
continued on next page >>>>>>>>

Installation information



3

Lift flashing away from sheet material and apply bead of silicone sealant to underside of flashing base.



4

Firmly redress flashing, and fix base to sheet as shown. Apply silicone to top of rubber cone.

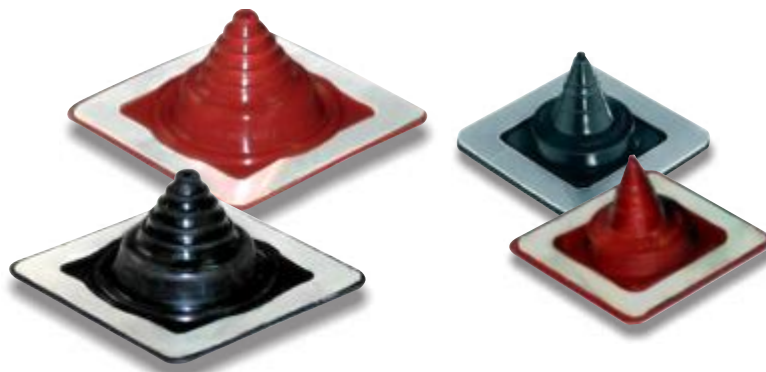


Seakit.01

5

All the necessary tools and fixings are included in the optional Metal Roof sealing fixing kit (SEA-KIT01). Silicon seal trimming knife, drill bit, silicone sealant, self tapping fixing screws and plastic screw head covers.

When the pipe seal is in place on the roof, drill through the metal frame part of the pipe seal and into the roof. Secure the seal to the roof with the self tapping screws provided in the kit. Finish by pushing the plastic covers over the screw heads.



Solarseal 550

Solarseal 325

Intaeco Limited
Mustang Drive
Stafford ST16 1GW