



*heating and plumbing products
that won't cost the earth*

"East-West" Solar installation Technical Data



intaECO Limited
Airfield Industrial Estate
Hixon,
Staffordshire
ST18 0PF

Tel: 01889 207200
Fax: 01889 270577
Website: www.intaeco.co.uk

“East-West” Solar installation

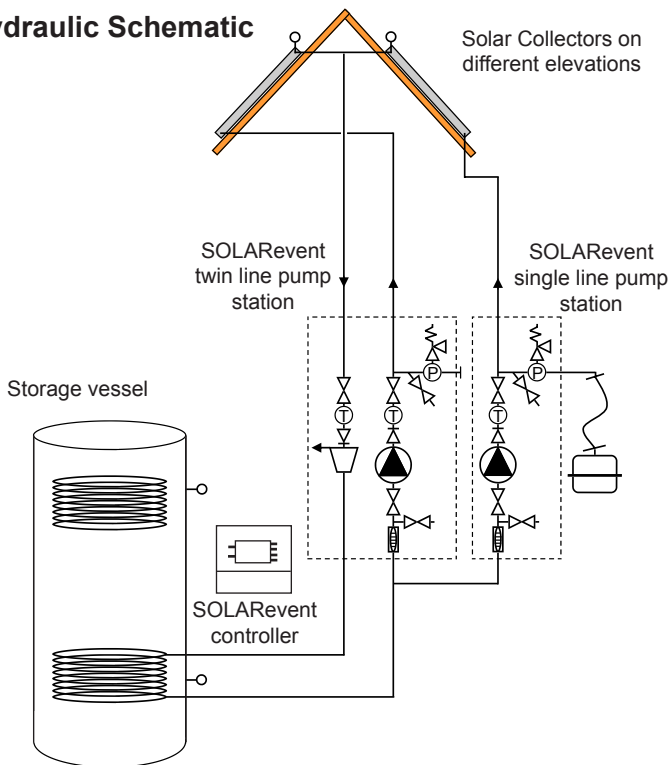
Description

An “East-West” solar installation describes a solar system that uses two independent arrays of solar panels. These are usually either facing in different directions or in a position where shading of one or both arrays at certain times of the day is a problem. To circulate the solar fluid through one or both arrays requires two independent pump stations.

This document illustrates the usual arrangement of the two pump stations - a SOLARevent twin line, a SOLARevent single line pump stations and a separate SOLARevent controller.



Hydraulic Schematic

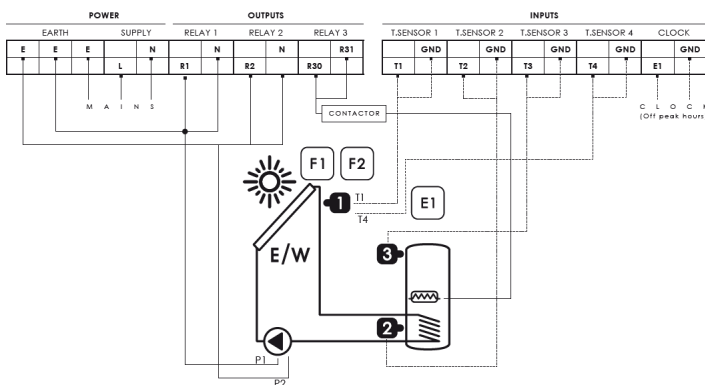


SOLARevent twin and single line pump sets



SOLARevent solar system controller

Wiring Diagram



T1 : Solar collector 1
 T2 : Water tank, bottom
 T3 : Water tank, top
 T4 : Solar collector 2

R1 : Solar pump 1
 R2 : Solar pump 2 (optional)
 R3 : Electric heater
 E1 : Clock sync

SYSTEM 13
 Solar system with East/West collector
 Fields (F1 and F2) and Electric Backup
 Heating

Cat No.	Description
IM.SR001.IESE	SOLARevent solar thermal system controller
EV1-1565GS1	EV1.2 SOLARevent single line pump set complete with Grundfos 15-80 solar circuit pump (3-10 ltrs / min)
EV21-1576S1	EV1.21 SOLARevent single line pump set complete with Grundfos 15-80 solar circuit pump (2-7 ltrs / min)
EV23-1587S1	EV1.23 SOLARevent single line pump set complete with Grundfos 15-80 solar circuit pump (7-25 ltrs / min)
EV2-1565GT2	EV2.2 SOLARevent twin line pump set complete with Grundfos 15-80 solar circuit pump (3-10 ltrs / min)
EV21-1576T2	EV2.21 SOLARevent twin line pump set complete with Grundfos 15-80 solar circuit pump (2-7 ltrs / min)
EV-23-1587T2	EV2.23 SOLARevent twin line pump set complete with Grundfos 15-80 solar circuit pump (7-25 ltrs / min)

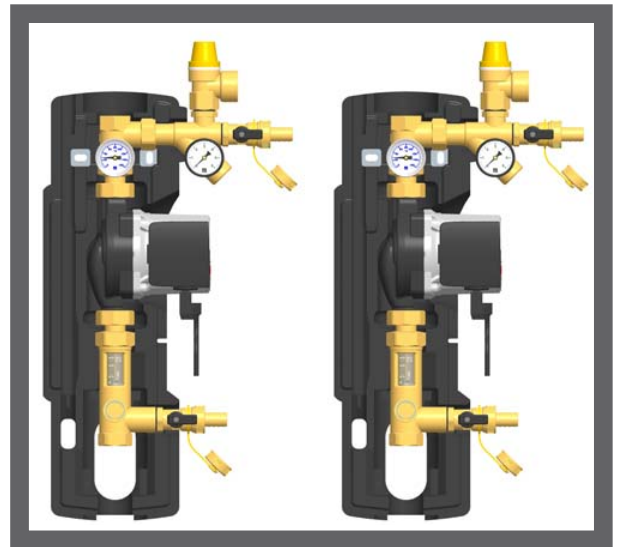
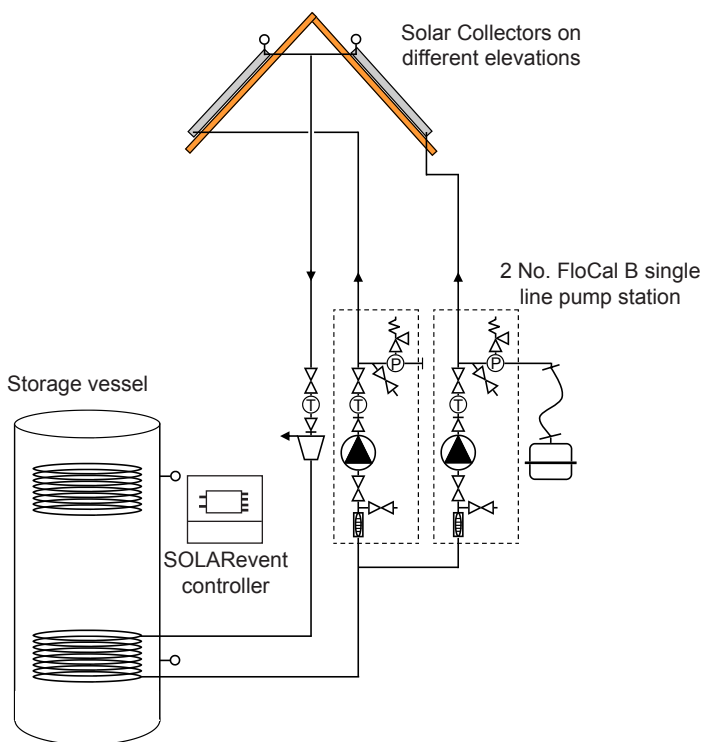
“East-West” Solar installation

Description

An “East-West” solar installation describes a solar system that uses two independent arrays of solar panels. These are usually either facing in different directions or in a position where shading of one or both arrays at certain times of the day is a problem. To circulate the solar fluid through one or both arrays requires two independent pump stations.

This document illustrates the usual arrangement of the two FloCal B single line pump stations and a separate SOLARevent controller.

Hydraulic Schematic

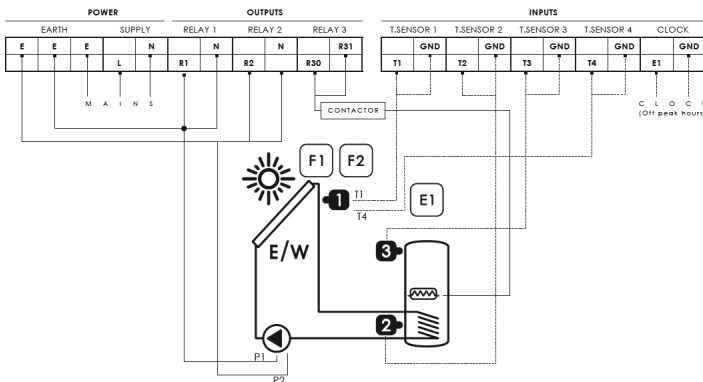


Flocal B single line pump sets



SOLARevent solar system controller

Wiring Diagram



T1 : Solar collector 1
 T2 : Water tank, bottom
 T3 : Water tank, top
 T4 : Solar collector 2
 R1 : Solar pump 1
 R2 : Solar pump 2 (optional)
 R3 : Electric heater
 E1 : Clock sync
SYSTEM 13
 Solar system with East/West collector Fields (F1 and F2) and Electric Backup Heating

Cat No.	Description
IM.SR001.IESE	SOLARevent solar thermal system controller
SE-741111WS6	FloCal B single line pump set complete with Wilo ST25/6-3 solar circuit pump (1-13 ltrs / min)

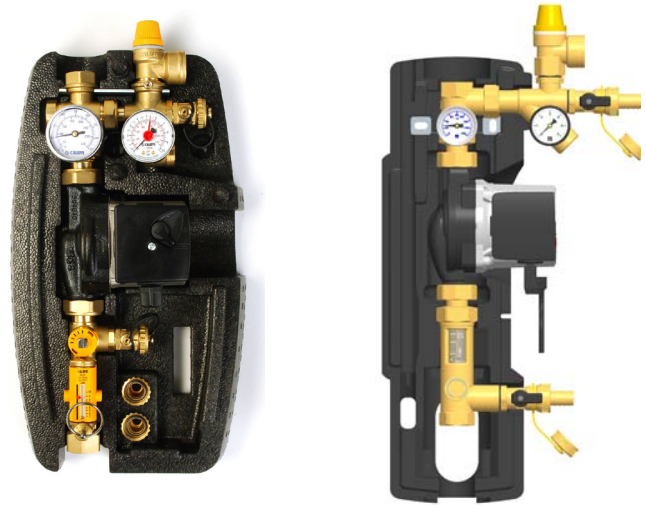
Twin line pump stations



SOLARevent twin line solar pump station integrate the most important hydraulic components required for the operation of a solar system in one easy to install pre-assembled package. Included in the twin line pump stations are:

- solar thermal pump - either WILO or Grundfos models available
- thermometers for flow and return
- return line with ball valve and adjustable non-return valve
- adjustable flowmeter with scale
- safety assembly with relief valve and pressure gauge
- expansion vessel connection
- Fill/Drain valve for filling and flushing of the system
- wall mounting bracket with screws and wall plugs
- Air pot with manual vent valve
- thermal insulation
- pre-assembled and ready to plug in

Single line pump stations



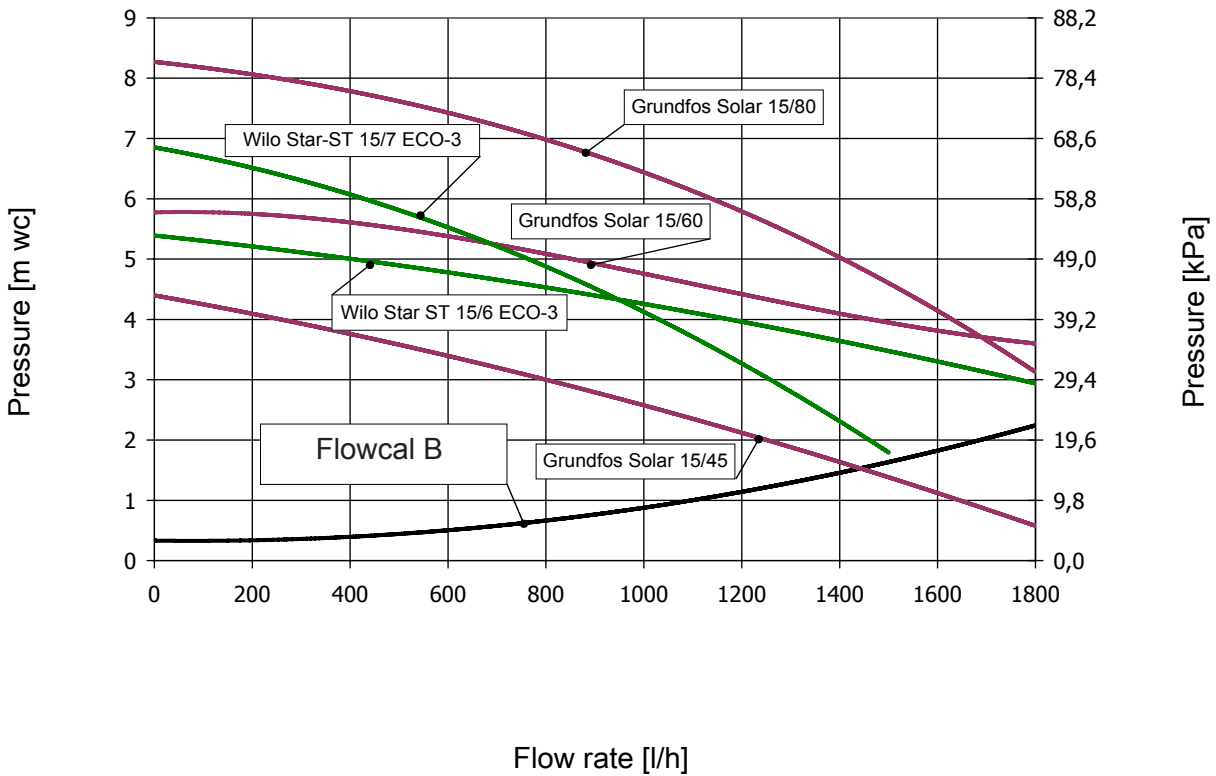
SOLARevent and FloCal B single-line solar pump stations for integration into a solar return line.

The most important hydraulic components required for the operation of a solar system are already mounted for easy and quick installation. Included in the single line pump station are:

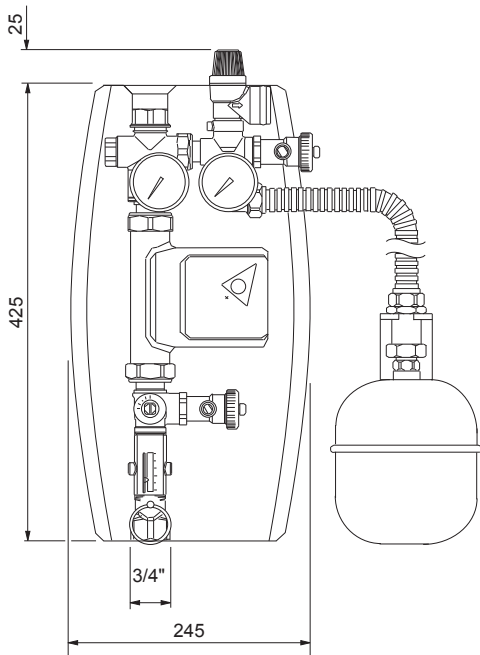
- solar thermal pump - either WILO or Grundfos models available
- adjustable flowmeter
- safety assembly with relief valve and pressure gauge
- filling and flushing connections
- wall mounting bracket with screws and wall plugs
- thermal insulation
- pre-assembled and ready to plug in

“East-West” Solar installation

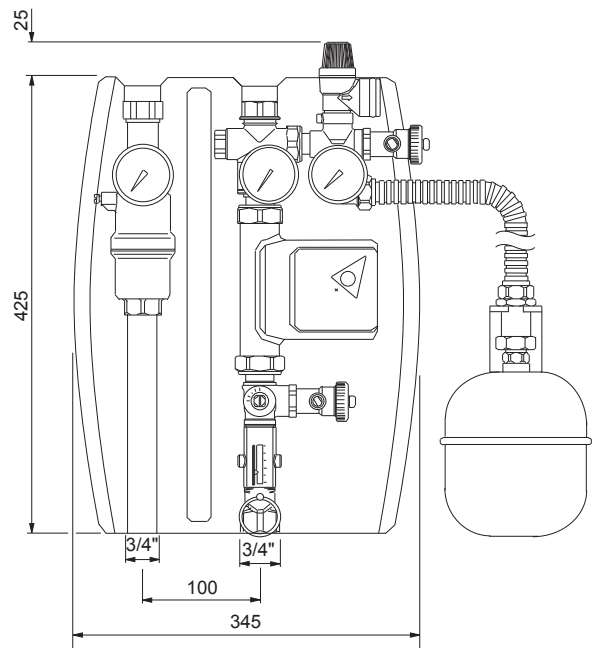
Pressure drop / pump characteristics



Dimensions

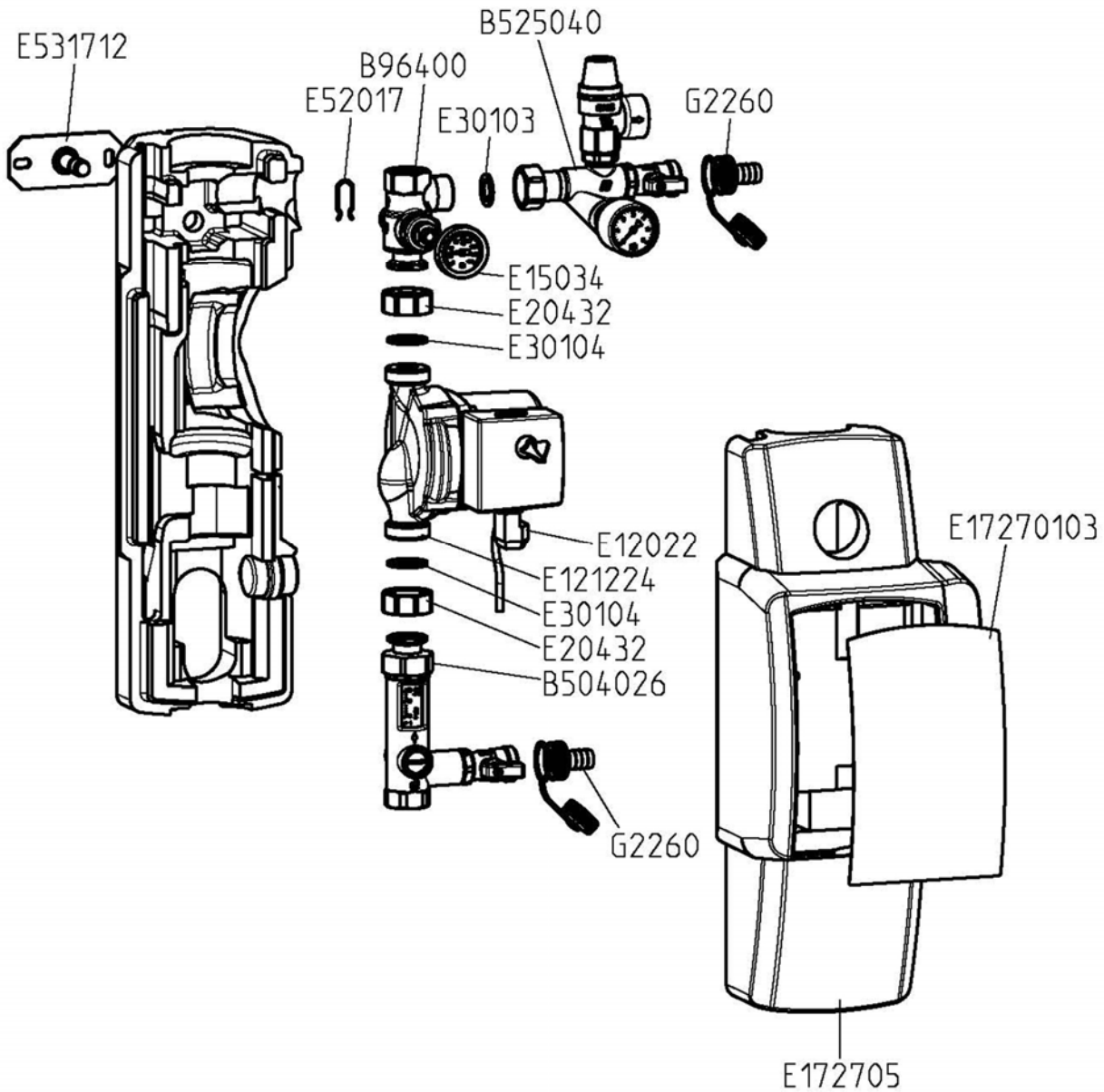


SOLARevent Single Line Pump Set



SOLARevent Twin Line Pump Set

FloCal B single line pump set exploded view



Part	Station	Spare part
	741111WS6	Wilo Star-ST 15/6 ECO-3 = E12319MO
	741111WS7	Wilo Star-ST 15/7 ECO-3 = E12320MO
	741111GS4	Grundfos Solar 15-45, 3-speed = E121201
	741111GS6	Grundfos Solar 15-60, 2-speed = E121223
	741111GS8	Grundfos Solar 15-80, 2-speed = E121224



intaECO Limited
Airfield Industrial Estate
Hixon,
Staffordshire
ST18 0PF

Tel: 01889 207200
Fax: 01889 270577
Website: www.intaeco.co.uk