



*heating and plumbing products  
that won't cost the **earth***

## Lever isolation ball valves

July 2010



## Lever isolation ball valves

These general purpose on/off isolation valves with a 90 degree operation can be used for fluids including brine or glycol mix solutions. They remain operational even at the low temperatures found in ground loops. The valves are also Wras approved for use in general plumbing tasks.

Minimum temperature	minus 20°C
Maximum temperature	99°C
Materials	DT58 Brass
Max. working pressure	25 bar



2 way lever ball valves

product description	code
1" F x F lever ball valve - RED handle	IE1-R
1¼" F x F lever ball valve - RED handle	IE125-R
1½" F x F lever ball valve - RED handle	IE15-R
2" F x F lever ball valve - RED handle	IE2-R
1" F x F lever ball valve - BLUE handle	IE1-B
1¼" F x F lever ball valve - BLUE handle	IE125-B
1½" F x F lever ball valve - BLUE handle	IE15-B
2" F x F lever ball valve - BLUE handle	IE2-B

## Diverter isolation ball valves

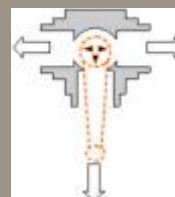
These valves are similar in many respects to the valves above - except that they offer 3 way operation or as a diverter valve through two ports only.

Minimum temperature	minus 20°C
Maximum temperature	99°C
Materials	DT58 Brass
Max. working pressure	25 bar

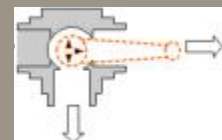


3 way diverter ball valve

product description	code
1" 3 way T port manual lever ball valve	0300/06/T



handle position for "T" port operation



handle position for divert one way only